



Town of Shelburne, Vermont

CHARTERED 1763

P.O. BOX 88 5420 SHELBURNE ROAD SHELBURNE, VT 05482

Clerk/Treasurer
(802) 985-5116

Town Manager
(802) 985-5111

Zoning & Planning
(802) 985-5118

Assessor
(802) 985-5115

Recreation
(802) 985-5110

FAX Number
(802) 985-9550

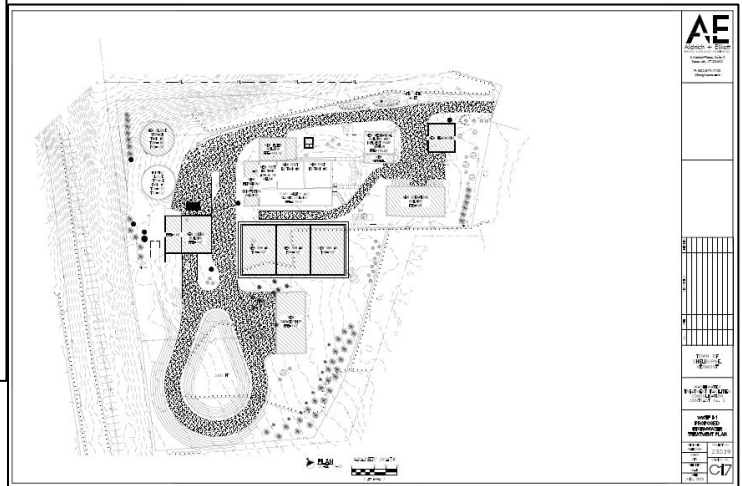
Town Manager Report: September 2024



From the desk of Matt Lawless

Wastewater Plant on November Ballot

Early voting is underway, on this vital project. The question to Town voters is whether to issue bonds for a consolidated sewage plant. Years of study produced this design and project plan. We believe the consolidated plant will operate more efficiently, provide essential services, and maintain compliance with environmental laws. Only wastewater customers pay for the project debt. This chart shows the modest effect on wastewater bills. Please vote Yes for a clean, efficient combined plant.



A Small Household
Average Bill Goes Up
By **\$10 per year**



A Large Household (or Small
Business) Average Bill
Goes Up By **\$32 per year**

A small household is defined as a property that uses on average 20,000 gallons per year and a large household (or small business) is defined as a property that uses on average 70,000 gallons per year.

The following chart shows the average total bill price per year starting this year to the year 2034. Construction would be complete in 2028 with debt repayment starting in 2029. Long term operations become more efficient with one plant. This is an example and not a real bill, an individuals bill is dependent on individual usage.

Post Bond Per Year Bill Increase Chart

	2025	2026	2027	2028	2029	2030	2031	2032	2033	2034
	Current	3%	2.5%	2.25%	2.25%	2%	2%	2%	2%	1.5%
20k User	\$389	\$401	\$412	\$423	\$433	\$442	\$451	\$460	\$469	\$476
70k User	\$1361	\$1402	\$1437	\$1470	\$1503	\$1533	\$1563	\$1595	\$1627	\$1652

November Election Details

Vermont does an outstanding job with ballot access and options to encourage high voter turnout. But changing laws can still be a little confusing!

- Same-day voter registration is allowed
- All active voters will get a ballot by mail
- The ballot will have all the races on it, from president to the Town bond vote
- Vote early by mail, or in person on Nov. 5

Remember to vote the back of the ballot, too! It has the Shelburne-specific items.

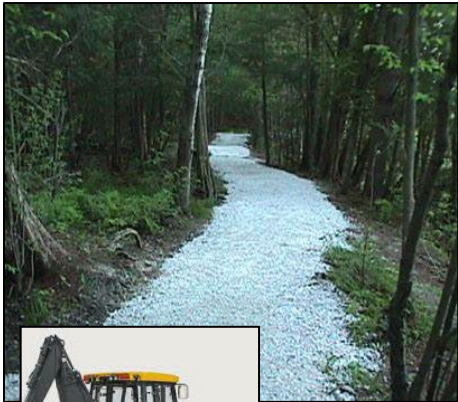
Notable Upcoming Public Meetings & Events

- October 9:** Town Hall for wastewater project
- Oct. 14:** offices closed for Indigenous Peoples Day
- Oct. 10:** Planning Commission focus on capital
- October 27:** Halloween Parade and festivities
- October 29:** Town Hall for wastewater project

What's new around town

Capital Planning

Capital assets are the high-value, long-lasting items which require more careful consideration outside of the annual operating budget. We often use debt to pay for them, since they benefit future residents. Local governments generally have capital improvement plans (CIP), detailing their priorities, funding sources, and schedules for construction. In Shelburne, we have ambitious plans for improvements to public safety, mobility, parks and recreation, and many other types of capital. Our CIP update is underway now. The Planning Commission will advise whether all the projects are consistent with the Town Plan, then the Selectboard determines the priority and sequence of projects.



Various capital assets of the Town's

(Very Nearly) Fully Staffed
 Human Resources Manager Adam Backus has done great work with the Town's department heads. With the exception of two police and two dispatch positions, the Town is fully staffed! It has been years since we achieved this operational goal. Vermont's jobless rate remains a very low 2.2%, so hiring is tight. The Town is an appealing place to work!



Award Winning Architecture

The Vermont Recreation and Parks Association (VRPA) awarded the **2024 Facility of Merit Award** for the new Shelburne Beach House. This award went to Jeff McBride, the architect for our project, who donated his time for the new Beach House since 2017. Betsy, Sue, and the Recreation Committee received the award at the VRPA annual meeting. Jeff, who is the Principal of Sidehill Designs in Shelburne, was inspired by the land and history of Shelburne Beach. Jeff's vision brought an old Vermont barn vibe to the building, with wood siding locally sourced and donated from Shelburne Farms. Congratulations!

