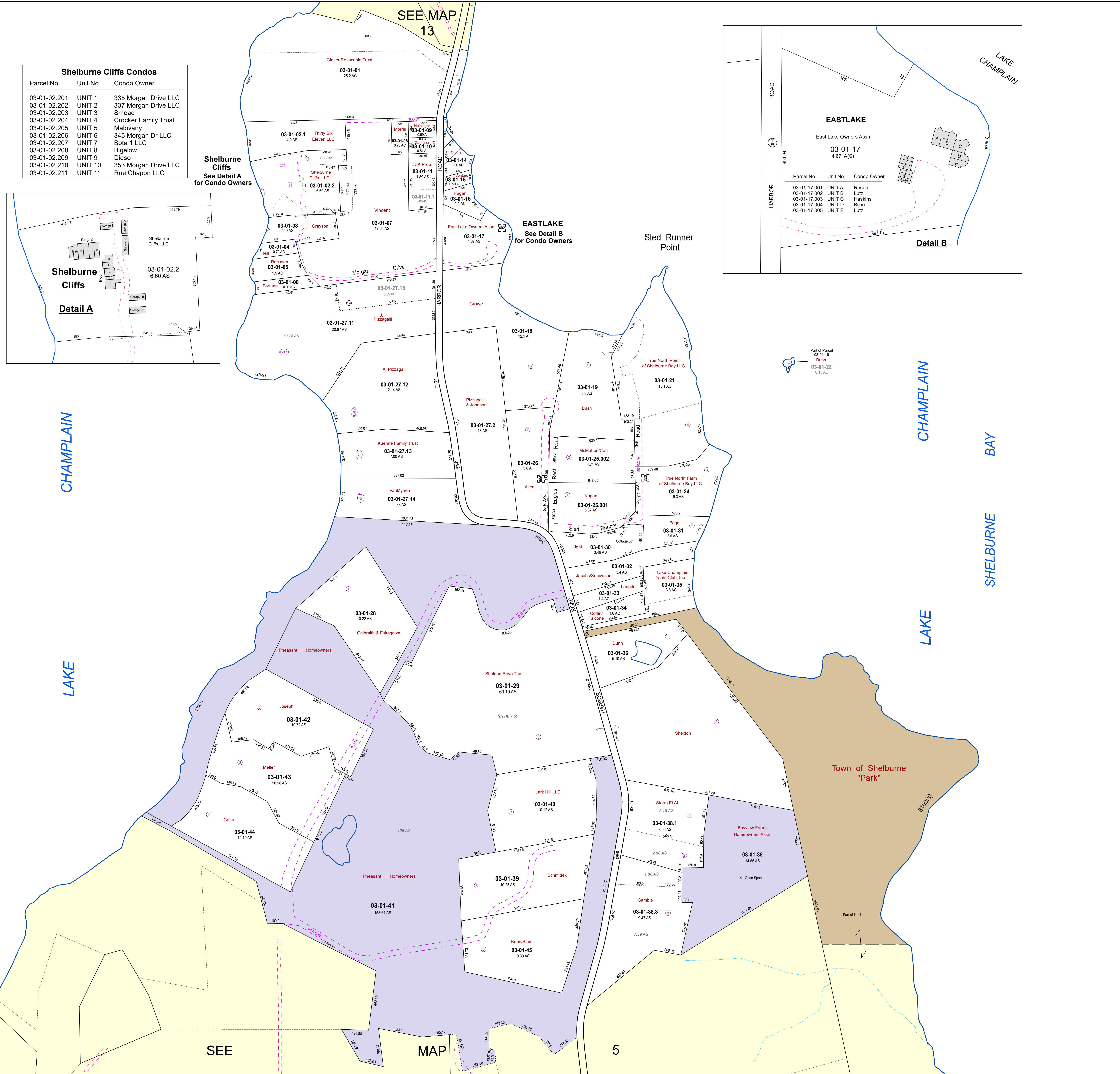
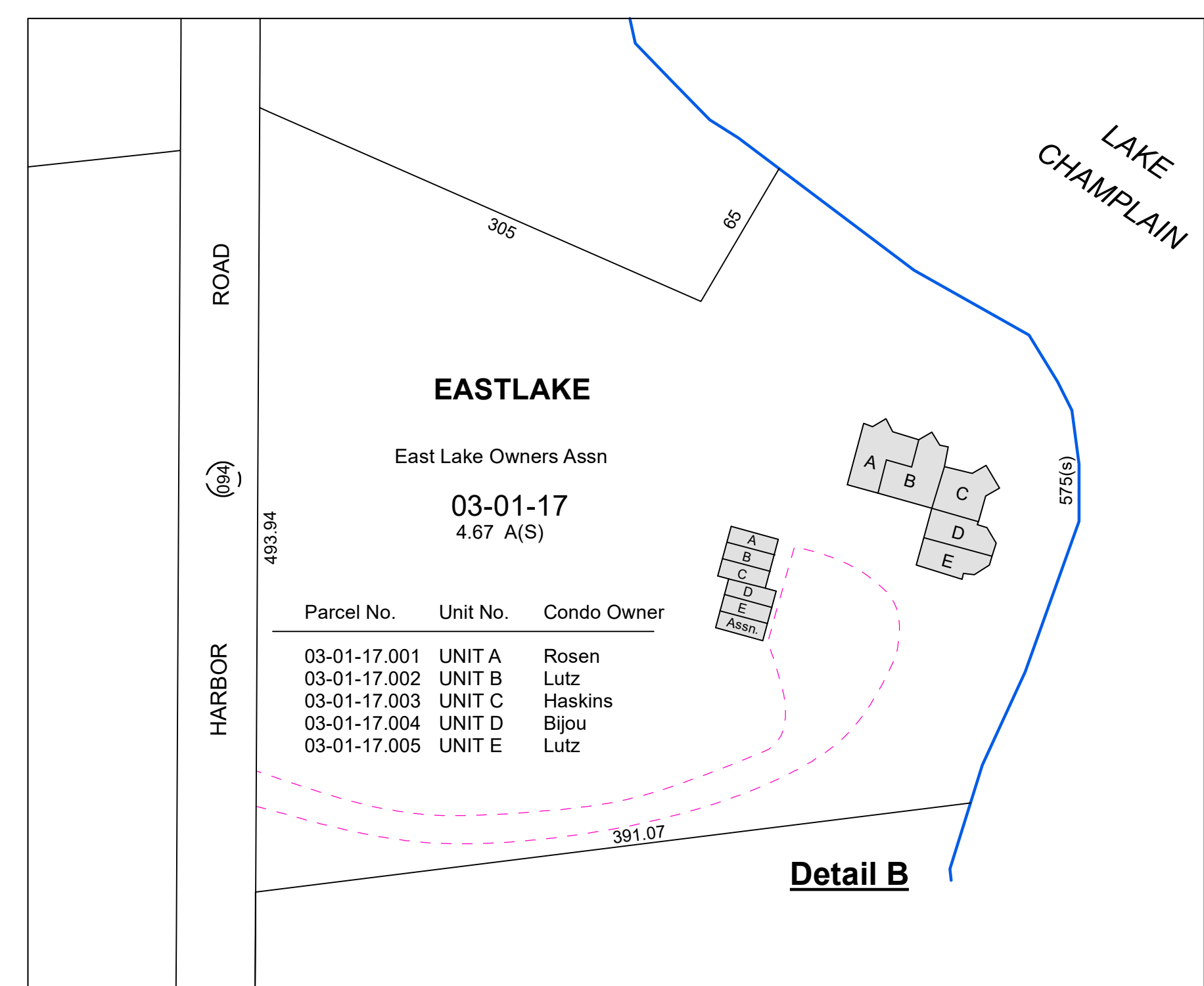
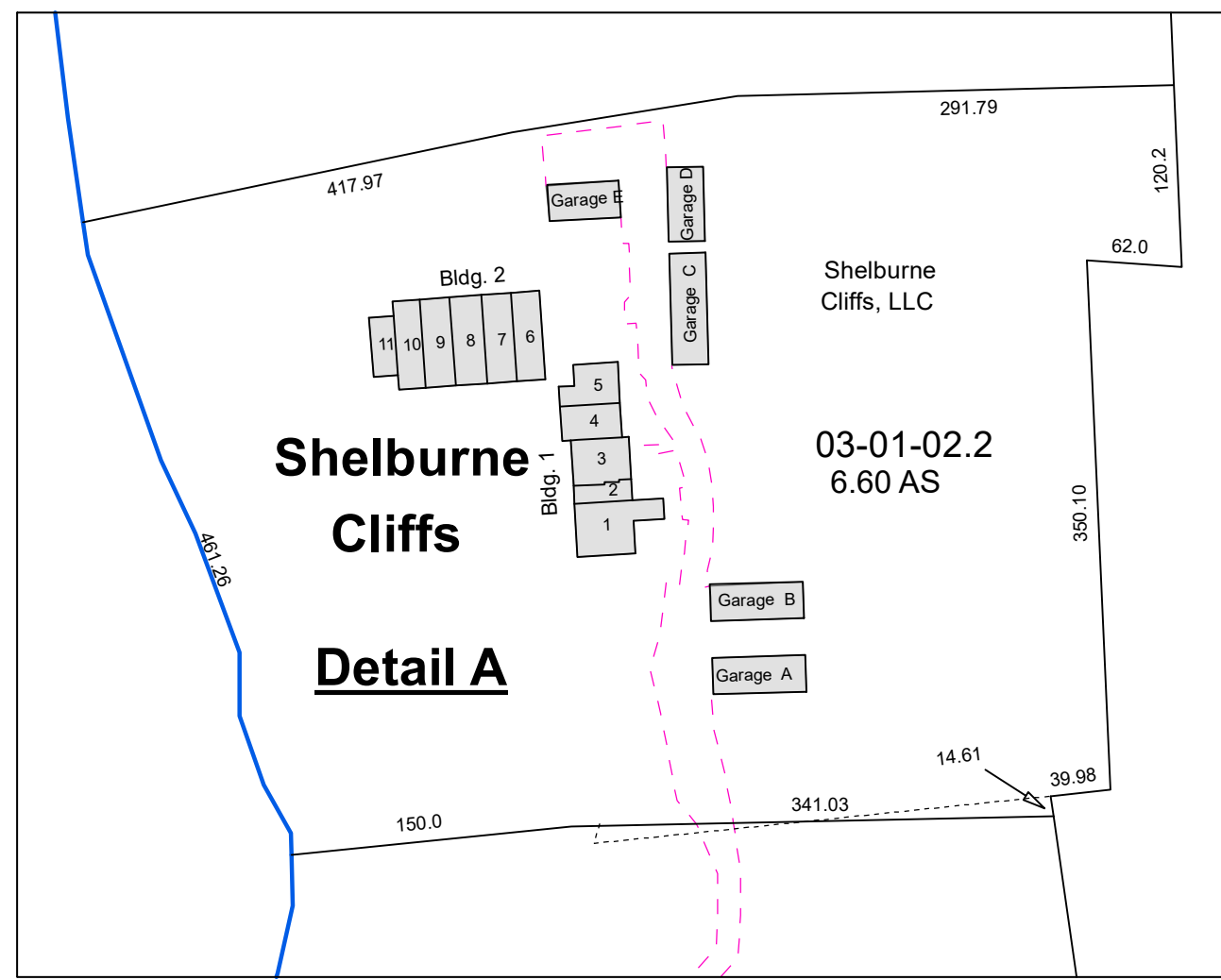


Shelburne Cliffs Condos		
Parcel No.	Unit No.	Condo Owner
03-01-02.201	UNIT 1	335 Morgan Drive LLC
03-01-02.202	UNIT 2	337 Morgan Drive LLC
03-01-02.203	UNIT 3	Smead
03-01-02.204	UNIT 4	Crocker Family Trust
03-01-02.205	UNIT 5	Malovany
03-01-02.206	UNIT 6	345 Morgan Dr LLC
03-01-02.207	UNIT 7	Bota 1 LLC
03-01-02.208	UNIT 8	Bigelow
03-01-02.209	UNIT 9	Dieso
03-01-02.210	UNIT 10	353 Morgan Drive LLC
03-01-02.211	UNIT 11	Rue Chapon LLC



THIS MAP IS FOR ASSESSMENT PURPOSES. IT IS NOT VALID FOR LEGAL DESCRIPTION OR CONVEYANCE.
 THE HORIZONTAL DATUM IS THE VERMONT STATE PLANE COORDINATE SYSTEM, NAD 83.

REVISED & REPRINTED BY
CAI Technologies
 Precision Mapping, Geospatial Solutions
 11 PLEASANT STREET, LITTLETON, NH 03561
 800.322.4540 - WWW.CAI-TECH.COM

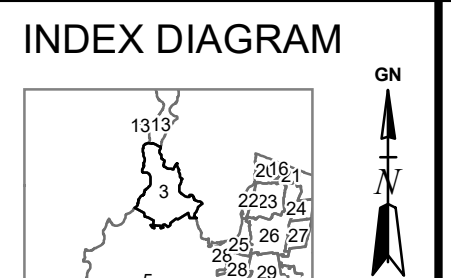
Parcel Number	20-50-23.1	Legend
Deed Acres	100 A	Match Line
Computed Acres	100.5 AC	Property Line
Surveyed Acres	100.25 AS	Deed Line
Scaled Dimensions	500(s)	River thru Parcel
Deed/Survey Dim.	450.15	Rainbow Body
		Veeco Easement
		Town Line

LEGEND

- Open Space
- Nat. Conserv.
- Town Owned
- River as a Property Line
- River thru Parcel
- Private R.O.W.

FEET: 0 120 240 480 720
 METERS: 0 30 60 120 180
 REVISED TO: APRIL 1, 2023

PROPERTY MAPS
SHELBURNE
 VERMONT



MAP NO.
3